

Association of glutathione-S-transferase P1 genotypes with susceptibility to bronchial asthma in children

Sherif M. Abdel-Alim¹, Manal M. El-Masry², Mona Aziz², Soheir O. El-Bassiony³, Azza A. Aly³

¹Department of Paediatrics, Cairo University, Egypt

²Department of Clinical and Chemical Pathology, Cairo University, Egypt

³Department of Clinical and Chemical Pathology, National Research Centre, Cairo, Egypt

Submitted: 10 May 2007

Accepted: 16 August 2007

Arch Med Sci 2007; 3, 3: 200-207

Copyright © 2007 Termedia & Banach

Corresponding author:

Azza Ahmed Aly
Department of Clinical
and Chemical Pathology
National Research Centre (NRC)
Cairo, Egypt
Phone: + 202 376 00 60,
+202 376 12 22
E-mail: sara89_feps@yahoo.com

Abstract

Introduction: Asthma is characterized by airway inflammation, a critical component of which is oxidative stress. We describe an association study designed to examine whether allelic variation at the glutathione-S-transferase GSTP1 locus influences expression of asthma.

Material and methods: Fifty asthmatic children, thirty-five atopic and fifteen nonatopic, with forty healthy controls were enrolled in the study. All participants were subjected to complete blood count, total serum IgE, skin prick testing and peak expiratory flow rate. Polymerase chain reaction-based assays were performed to determine GSTP1 genotypes among asthmatic and healthy control subjects. We explored whether the GSTP1 substitutions influence susceptibility to asthma and its phenotypes.

Results: Among the 90 cases, 43 cases (47.8%) had GSTP1 genotype BB, 39 cases (43.3%) had GSTP1 genotype AA, 6 cases (6.7%) had GSTP1 genotype AB, and 2 cases (2.2%) had GSTP1 genotype AD. We found no significant differences in mean values of total serum IgE and skin test positivity among different genotypes. The PEF% predicted of the BB genotype was significantly higher than that of both AA and AB genotypes ($p < 0.001$), with no significant differences between the latter two genotypes. The frequency of GSTP1 AA was increased significantly in the asthmatic cases (76.9%) compared to controls (23.1%), with p value < 0.001 . However, the frequency of GSTP1 BB was decreased in the asthmatics (32.6%) compared to controls (67.4%), with p value < 0.1 .

Conclusions: The results of the present study suggest that GSTP1 BB conferred almost a threefold lower risk of asthma than did GSTP1 AA.

Key words: glutathione-S-transferase P1 polymorphism, bronchial asthma.

Introduction

Asthma is a disorder with complex genetic and environmental interactions that affect the developing immune system and ultimately result in the episodic release of procontractile mediators causing susceptible individuals to wheeze [1]. Advances in asthma management are likely to depend on a better understanding of how genetic factors influence susceptibility to and outcome in this disease [2].

Although asthma is characterized by airway inflammation, a critical component of which is oxidative stress with the formation of reactive oxygen species (ROS), few data exist on genes involved in protecting against this insult [3]. Individuals differ in their ability to deal with an

oxidant burden, and such differences are in part genetically determined [4].

Inability to detoxify ROS should perpetuate the inflammatory process, activate bronchoconstrictor mechanisms, and precipitate asthma symptoms [5]. Thus members of the glutathione-S-transferase (GST) supergene family are proposed to be attractive candidates, for linkage to asthma, as enzymes encoded by members of the mu, theta, and pi class GST gene families are critical in the protection of cells from ROS because they can utilize as substrates a wide variety of products of oxidative stress [6]. Thus, the enzymes encoded by these GST gene classes preferentially utilize different ROS products. For example, quinone metabolites of catecholamines (dopachrome) are utilized by mu GST (but not by GSTP1 or GSTT1). GSTT1 utilizes oxidized lipid and DNA, and GSTP1 catalyzes the detoxification of base propanals that arise from DNA oxidation. Mu and theta (but not pi) GST demonstrate activity toward a phospholipid hydroperoxide [7]. These GSTs may also influence the synthesis of eicosanoids (critical mediators in the asthmatic response) via modulation of ROS levels [8]. The biochemical significance of these polymorphisms is indicated by data showing that particular genotypes are associated with an increased susceptibility to and/or poor outcome in several inflammatory pathologies including systemic lupus erythematosus [9] and rheumatoid arthritis (RA) [10].

Glutathione S-transferase P1 (GSTP1), the abundant isoform of glutathione S-transferases (GSTs) in lung epithelium, plays an important role in cellular protection against oxidative stress and toxic foreign chemicals [11]. It has been suggested that polymorphisms in the GSTP1 gene are associated with asthma and related phenotypes. The alleles of GSTP1 that encode the Ile¹⁰⁵→Val¹⁰⁵ substitution are associated with the asthma phenotypes of atopy and bronchial hyper-responsiveness [12]. However, a further polymorphic site (Ala¹¹⁴→Val¹¹⁴) has been identified that results in the following alleles: GSTP1 A (wild-type Ile¹⁰⁵→Ala¹¹⁴), GSTP1 B (Val¹⁰⁵→Ala¹¹⁴), GSTP1 C (Val¹⁰⁵→Val¹¹⁴) and GSTP1 D (Ile¹⁰⁵→Val¹¹⁴) [13].

Because full identification of GSTP1 alleles may identify stronger links with asthma phenotypes, in this study we will use an amplification refractory mutation system (ARMS) assay that allows identification of GSTP1 genotypes. We will also explore whether the GSTP1 polymorphism is associated with asthma and related phenotypes including atopic status as well as airway obstruction.

The aim of this work is to describe an association study designed to examine whether allelic variation at the glutathione-S-transferase GSTP1 locus influences expression of asthma.

Material and methods

This study included 50 asthmatic children, 14 (28%) females and 36 (72%) males, aged 4-14 years. They were chosen among the attendants of the outpatient clinic of allergy and immunology, Cairo University Paediatric Hospital. Asthma was diagnosed based on the Global Initiative for Asthma (GINA) guidelines [14].

Clinical examination

All cases and controls were subjected to detailed history and thorough clinical examination.

The asthmatic cases were clinically classified into asthmatic atopic (35 patients, 70%) and asthmatic nonatopic (15 patients, 30%). A positive skin reaction (mean wheal diameter of at least 3 mm more than with saline control) in response to at least one of the tested allergens and serum IgE levels greater than 100 IU/ml were used to define atopic status, together with personal history. 40 normal age and sex matched healthy children were enrolled in this work as controls.

Laboratory investigations included

Complete blood count, total serum IgE determination by enzyme linked immunosorbent assay (ELISA) using kit manufactured by Biosource Europe SA, peak expiratory flow rate (PEFR) using peak flow meter, and determination of GSTP1 genotypes. Allergy skin prick testing was performed in all cases using a panel of common environmental allergens including house dust, house dust mite, multiple pollens, mixed moulds, feather, milk, eggs, wool, grass mix, cockroach, cat and dog furs, as well as positive and negative controls. Clinical parameters of recruited subjects are shown in Table I.

Genotyping

DNA was extracted from peripheral blood of all subjects using QIAGEN DNA extraction mini kit (Catalog No. 51104). 20 µl of QIAGEN protease were pipetted into the bottom of a 1.5 ml microcentrifuge tube. 200 µl of whole blood were added to the microcentrifuge tube. 200 µl of the buffer AL were added to the sample and mixed by pulse vortexing for 15 seconds, followed by incubation at 56°C for 10 minutes. 200 µl of absolute ethanol were added to the sample and mixed again by pulse vortexing for 15 seconds. This mixture was carefully applied to the QIA amp spin column and centrifuged at 8000 rpm for 1 minute. 500 µl of the buffer AW were added and centrifuged for 1 minute at 8000 rpm. 500 µl of the buffer AW2 were added to the QIA amp spin column and centrifuged at full speed 14,000 rpm for 3 minutes. The QIA amp spin column was placed in a new 1.5 ml microcentrifuge tube and 200 µl of the buffer AE or distilled water was

added. Incubation at room temperature for 5 minutes and then centrifugation for 1 minute at 8000 rpm was performed. The DNA was then stored at -20°C.

Identification of GSTP1 Ile¹⁰⁵→Val¹⁰⁵ and Ala¹¹⁴→Val¹¹⁴ substitutions using an amplification refractory mutation system polymerase chain reaction assay

The polymorphic detection of GSTP1 gene was genotyped using the multiplex PCR approach described by Zhong et al. [15].

The PCR primers used were as follows: a forward primer upstream of the codon 105 substitution (5'-ACCCAGGGCTC-TATGGGAA-3'). Two reverse primers: primer A (Ala¹¹⁴ specific), 5'-TCACATAGT CATCCTTGCCGG-3'; primer B (Val¹¹⁴ specific), 5'-TCACATAGTCATC-CTTGCCGA-3'. For each DNA sample two polymerase chain reactions (PCRs) were performed, amplifying a 998 base pair fragment. The first included the forward primer and the reverse primer A and the second included the forward primer and the reverse primer B.

All reactions were performed in a total volume of 25 µl containing 12.5 µTaq master mix, 25 pmole/µl of the forward primer and either of the two reverse primers, 1 µl of the extracted DNA, and the total volume was completed by distilled water. A PCR reaction mixture for each of the DNA samples was prepared under a laminar flow cabinet. The PCR reaction tubes were placed in the DNA thermal cycler (Perkin-Elmer-9600), which was programmed for the following conditions: 94°C for 4 minutes, 30 cycles of denaturation (94°C, 1 minute), primer annealing (62°C, 1 minute) and elongation (72°C, 2 minute). The samples were then analyzed by electrophoresis on a 2% agarose gel and visualized by UV transillumination. ARMS PCR products were then digested with Bsm AI to determine the cis/trans configuration (which variant at position 105 is paired with which allele at position 114) of the Ile¹⁰⁵→Val¹⁰⁵ encoding allele, and incubated with

the enzyme at 37°C overnight. The incubated samples were then analyzed by agarose gel electrophoresis (4%) and visualized on a UV transilluminator.

Interpretation of the ARMS PCR results

The initial ARMS PCR was used to determine the Ala¹¹⁴→Val¹¹⁴ genotype. Thus, in persons with Ala¹¹⁴/Ala¹¹⁴, amplification occurred only with primer A, and only with primer B in persons with Val¹¹⁴/Val¹¹⁴; for Ala¹¹⁴/Val¹¹⁴ heterozygotes, amplification occurred with both primers. Then ARMS PCR products were digested with Bsm AI to determine the cis/trans configuration of the Ile¹⁰⁵→Val¹⁰⁵ encoding allele. Products gave fragments of 343, 322, 260 and 73 base pairs with Ile¹⁰⁵/Val¹⁰⁵; and all six fragments in heterozygotes Ile¹⁰⁵/Val¹⁰⁵.

Statistical analysis

The Pearson χ^2 test and unpaired Student t-test were applied to analyze the difference between two groups. Multiple logistic regression models were used to control for potential confounders, and to evaluate the associations between the risks of asthma and GSTP1 genetic polymorphisms. Odds ratios (ORs) with 95% confidence intervals (CIs) are shown. Statistical significance was set at a p value of <0.05 based on a two-sided calculation.

Results

Comparison of clinical parameters of the study groups

As shown in Table I, no significant age or sex differences were found between the different clinical groups. Mean values of total serum IgE levels were significantly higher in the atopic asthmatic compared to the nonatopic asthmatic and the control group (p<0.001). Also there was a statistically significant difference in the mean value of PEFr% predicted between the control group and the asthmatic group (p<0.001). The

Table I. Comparison between clinical parameters of recruited subjects

	Atopic asthmatics	Nonatopic asthmatics	Controls
Sex			
male No (%)	25 (71.4)	11 (73.3)	31 (77.5)
female No (%)	10 (28.6)	4 (26.7%)	9 (22.5)
Age	7.20±2.83	8.73±3.13	7.43±1.95
IgE level (IU/ml)	515.20±687.25	176.08±132.78	79.13±10.20
PEFR% predicted	72.50±12.30	69.13±13.40	94.96±7.50
Eosinophilic count/mm³	529.80±308.34	483.00±304.66	204.00±71.63
No of skin test positivity	3.06±1.06	0.00	–

Values are means ±SD

eosinophilic count was significantly lower among the control group compared to both the atopic and nonatopic asthmatics ($p < 0.001$), but the latter two groups did not differ significantly.

GSTP1 genotypes in the study subjects

All asthmatic and control subjects were subjected to ARMS PCR for identification of GSTP1 genotypes; 43 cases (47.8%) had GSTP1 genotype BB, 39 cases (43.3%) had GSTP1 genotype AA, six cases (6.7%) had GSTP1 genotype AB and two cases (2.2%) had GSTP1 genotype AD. Figure 1 shows GSTP1 gene banding patterns of the gel electrophoresis.

Association of GSTP1 genotypes with atopic phenotypes and airway obstruction

Comparison of the different GSTP1 genotypic groups in all subjects as regards mean values of total serum IgE level, PEFr% predicted, and skin test positivity are presented in Table II. The mean total serum IgE levels were 218.0 ± 247.7 IU/ml for the AA genotype, 232.2 ± 319.6 IU/ml for the AB genotype, 197.5 ± 268.4 IU/ml for the BB genotype. We found no significant differences in mean values of total serum IgE among different genotypes. The PEFr% predicted for the GSTP1 genotype AA was $75.2 \pm 15.4\%$, $74.9 \pm 18.8\%$ for genotype AB, and $88.6 \pm 13.2\%$ for the BB genotype. The PEFr% predicted of the BB genotype was significantly higher than that of both AA and AB genotypes ($p < 0.001$), with no significant differences between the latter two genotypes (Figure 2). The number of cases with positive skin test in the AA genotype group was 22 (56%), 3 (50%) in the AB genotype, and 25 (58%) for the BB genotype. No significant association was found between GSTP1 genotypes and skin test positivity.

Association of GSTP1 genotypes with asthma

Table III shows the association of GSTP1 genotype with the presence of asthma. The frequency of GSTP1 AA was increased significantly in the

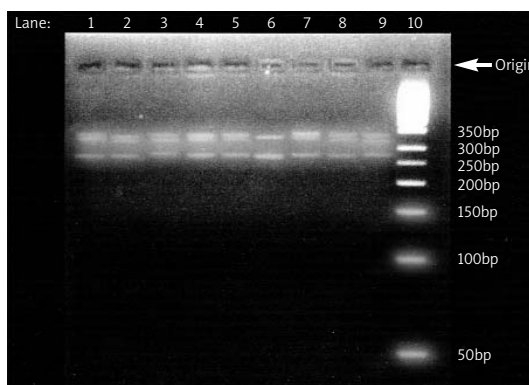


Figure 1. Gel electrophoresis of the GSTP1 gene polymorphism. All lanes include the amplified product from Ala114 specific primer. PCR products after digestion with Bsm A1 gave fragments of either, 343, 322, 260 and 73 base pairs for the Ile 105 allele as in lanes 1, 2, 3, 4, 5, 7, 8 and 9, or 322, 260, 250, 93 and 73 base pairs for the Val 105 allele as in lane 6. Lane 10 is the DNA marker (50 bp)

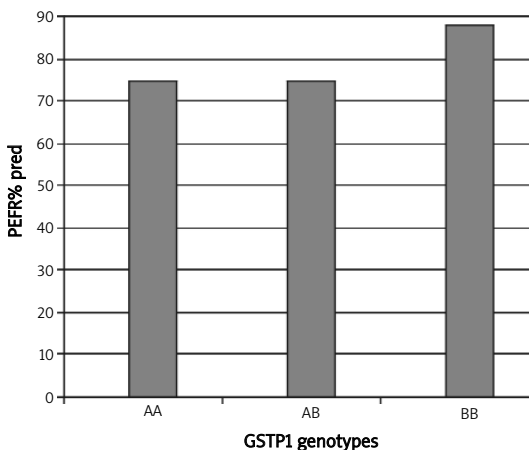


Figure 2. Comparison of the mean values of PEFr% predicted in the different GSTP1 genotypes

asthmatic cases (76.9%) compared to controls (23.1%), with p value < 0.001 . However, the frequency of GSTP1 BB was decreased in the asthmatics (32.6%) compared to controls (67.4%), with p value

Table II. Comparison between total serum IgE level, PEFr% predicted and skin test positivity among different GSTP1 genotypes

Parameter	GSTP1 genotypes			Significance
	AA (n=39)	AB (n=6)	BB (n=43)	
IgE level (IU/ml) Mean±SD	218.0±247.7	232.2±319.6	197.5±268.4	NS
PEFR % pred Mean±SD	75.2±15.4	74.9±18.8	88.6±13.2	*
Skin test positive No (%)	22 (56)	3 (50)	25 (58)	NS

PEFR% pred – peak expiratory flow rate percent predicted, NS – not significant

Table III. Association of GSTP1 genotype with the presence of asthma

GSTP1 genotypes	Asthmatic cases (n=50) No (%)	Controls (n=40) No (%)	Significant difference
AA (n=39)	30 (76.9)	9 (23.1)	p<0.001
AB (n=6)	4 (66.7)	2 (33.3)	-
AD (n=2)	2 (100)	-	-
BB (n=43)	14 (32.6)	29 (67.4)	p<0.01

p value <0.05 is considered statistically significant

<0.01. Regarding the AB and AD genotypes, we could not statistically compare between groups because of the small number of cases.

Figure 3 shows the comparison between asthmatic cases and controls as regards different GSTP1 genotypes. 30 out of 50 asthmatic cases (60%) had GSTP1 genotype AA, 14 cases (28%) had GSTP1 genotype BB, 4 cases (8%) had genotype AB and only 2 cases (4%) had genotype AD. On the other hand, among 40 control children, 29 cases (72.5%) had GSTP1 genotype BB, 9 subjects (22.5%) had GSTP1 genotype AA, and only 2 subjects (5%) had GSTP1 genotype AB. The percentage of subjects with AA genotype is significantly higher in the asthmatics compared to the control group (p<0.001). However, the percentage of subjects with BB genotype is significantly lower in the asthmatics as compared to controls (p<0.01).

Risk estimation for each genotype in the asthmatic and control groups using the unconditional logistic regression analysis, when the GSTP1 BB genotype was defined as the reference, is shown in Table IV. The GSTP1 AA genotype showed an odds ratio (OR) of 2.92 (95% confidence interval [CI], 1.589-5.376, p<0.001). Thus, cases with GSTP1 genotype AA have almost threefold greater risk of developing asthma when compared with BB genotype.

Table IV. Frequency of asthmatic cases and controls, odds ratios and 95% CI for GSTP1 genotypes

GSTP1 genotypes	Asthmatics (n=50) No (%)	Controls (n=40) No (%)	OR	95% CI	p value
BB	14 (28)	29 (72.5)	1.0	reference	-
AA	30 (60)	9 (22.5)	2.922	(1.589-5.376)	<0.001
AB	4 (8)	2 (5)	2.023	(0.640-6.393)	0.18
AD	2 (4)	0	NE	NE	-

OR – odds ratio; CI – confidence interval; NE – not estimated

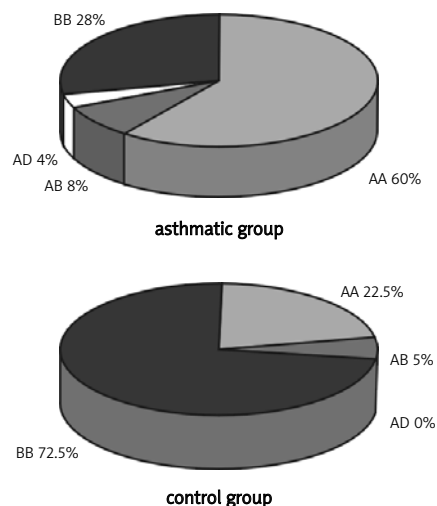


Figure 3. Comparison between asthmatic and control groups as regards different GSTP1 genotypes

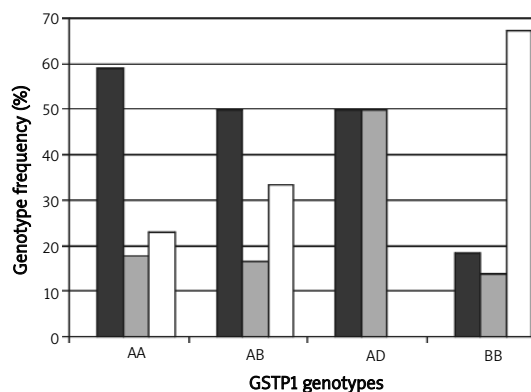


Figure 4. Comparison between the frequencies of different GSTP1 genotypes among clinical groups

Frequencies of GSTP1 in the study groups

The frequencies of GSTP1 genotypes in the three different clinical groups including atopic asthmatics, nonatopic asthmatics and control groups are shown in Figure 4. Among the GSTP1 genotype AA, 23 (59.0%) were atopic asthmatics, 7 cases (17.9%)

were nonatopic asthmatics and 9 controls (23.1%); while among the GSTP1 genotype BB, 8 cases (18.6%) were atopic asthmatics, 6 cases (14.0%) were nonatopic asthmatics and 29 controls (67.4%). The GSTP1 genotype AB included 3 cases (50.0%) of atopic asthmatics, one case (16.7%) of nonatopic asthmatic and 2 control cases (33.3%). Lastly, GSTP1 genotype AD had one case (50%) of atopic asthmatic and one case (50%) of nonatopic asthmatic. Significant differences were found between the atopic asthmatics (59%) and both the nonatopic asthmatics (17.9%, $p < 0.001$) and controls (23.1%, $p < 0.001$) in the frequencies of GSTP1 genotype AA. Also there were statistically significant differences in the frequencies of the BB genotype between the control group (67.4%) and both the atopic asthmatics (18.6%, $p = 0.008$) and nonatopic asthmatics (14%, $p < 0.001$); however, no significant difference was found between the last two groups.

Significant differences were found between the atopic asthmatics and both the nonatopic asthmatics ($p < 0.001$) and controls ($p < 0.001$) in the frequencies of GSTP1 genotype AA. There were statistically significant differences in the frequencies of the BB genotype between the control group and both the atopic asthmatics ($p = 0.008$) and nonatopic asthmatics ($p < 0.001$).

Discussion

Previous studies have shown a link between asthma and markers on chromosome 11q13 [3, 4, 16]. Although candidate genes for susceptibility to asthma have been identified, they are too distant from these markers to fully account for this linkage [17]. In this study we found associations between genotypes of GSTP1 and both asthma and airway obstruction in Egyptian children.

Polymorphisms of the glutathione-S-transferase (GST) genes are known risk factors for some environmentally-related diseases [18]. The *loci* encoding the glutathione-S-transferase (GST) enzymes comprise a large supergene family located on at least seven chromosomes. The main function of the GST enzymes has traditionally been considered to be the detoxification of reactive oxygen species (ROS) products by glutathione conjugation [19]. GSTP1 is of particular interest in asthma, because chromosome 11q13 is associated with its clinical phenotypes: atopy and BHR. Several candidates (high affinity IgE receptor, clara cell secretory protein) have been identified, although the encoding genes do not account for the strength of the linkage to this region [4]. We proposed that GSTP1 is another candidate gene in this region. Thus, the efficiency of detoxification of ROS products determined by polymorphism in GSTP1 may influence the development and/or severity of airway obstruction and asthma.

In this study we examined whether allelic variation at the glutathione-S-transferase GSTP1 *locus* influences expression of airway obstruction and asthma. In our study all asthmatic and control cases were subjected to ARMS PCR for identification of all GSTP1 genotypes. Out of the 90 subjects included in the study, 47.8% of these children had GSTP1 genotype BB, 43.3% had GSTP1 genotype AA, 6.7% had GSTP1 genotype AB, and 2.2% had GSTP1 genotype AD. However, in a group of 191 Northern European adults, Hemmingsen et al. in 2001 [20] reported that 3.7% of these subjects had BB genotype, 42.4% had AA genotype, 34.6% had AB genotype, and 1.1% had AD genotype. These differences in the results may be related to racial variations between the study groups.

In the present study there were no significant associations between GSTP1 genotypes and either IgE level or skin test positivity. On the other hand, the mean value of PEF% predicted was significantly higher in subjects with BB genotype compared with that of both AA and AB genotypes, indicating a protective effect of the BB genotype. Similarly, Hemmingsen et al. [20] found no association of GSTP1 genotypes and either skin test positivity or IgE level. They also stated that the frequency of GSTP1 AA increased with severity of airway obstruction, whereas BB and BC frequencies displayed a reverse trend, while Fryer et al. [21] stated that subjects with GSTP1 Val¹⁰⁵/Val¹⁰⁵ have 10-fold lower risk of exhibiting atopy defined by skin test positivity and IgE level. Carroll et al. [22] showed that GSTP1 genotypes were important determinants of lung function in childhood, and that GSTP1 Val¹⁰⁵/Val¹⁰⁵ was associated with significantly higher forced expiratory volume in 1 second, and thus Val¹⁰⁵ is protective against asthma and is present in the B and C alleles. Also, Gilliland et al. [23] stated that children with asthma who were homozygotes for the GSTP1 Val¹⁰⁵ allele had substantially larger deficits in FVC, FEV1 and maximal mid-expiratory flow.

In our study, significant differences were observed between asthmatic cases and controls as regards both GSTP1 genotype AA and genotype BB. The incidence of AA genotype was significantly higher among asthmatic cases compared with controls, while the incidence of genotype BB was significantly lower among asthmatic cases as compared with controls. Also we found that the incidence of GSTP1 genotype BB was significantly lower in both atopic and nonatopic asthmatic groups compared with the control group. These results suggest a significant association between GSTP1 Ile¹⁰⁵Val polymorphism and susceptibility to asthma and that the GSTP1 Val¹⁰⁵/Val¹⁰⁵ genotype may be protective against developing this disease. Also, when the GSTP1 BB genotype was defined as the reference, the GSTP1 AA genotype showed an odds ratio of 2.92 (95% CI,

1589-5.376, $p < 0.001$). This means that the presence of AA genotype conferred almost threefold higher risk of asthma than did BB genotype.

Aynacioglu et al. in 2004 [24] stated that the proportion of GSTP1 Val¹⁰⁵ homozygotes was significantly lower in the patients with asthma than in the control individuals. Similarly, Strange et al. [19] reported that GSTP1 Val¹⁰⁵/Val¹⁰⁵ was protective against asthma symptoms. Our results are also supported by Fryer et al. [21], who found that GSTP1 polymorphism is strongly associated with asthma and related phenotypes, and that the frequency of GSTP1 Val¹⁰⁵/Val¹⁰⁵ was significantly lower in asthmatic than in control subjects. Also, Lee et al. [25] found that children who were homozygous for Ile¹⁰⁵ locus had a significantly increased risk of physician-diagnosed asthma, while in another study by Lee et al. [26] when all participants were homozygous at the Ala¹¹⁴ locus, they found that only a marginally significant association existed between the frequency of homozygosity at the Ile¹⁰⁵ locus and asthma when air pollution was not considered. In contrast to our results, Nickel and his colleagues [27] did not find a significant association of GSTP1 polymorphisms with bronchial asthma or airway hyper-responsiveness in German children.

In the present study, by comparing both asthmatic groups, the incidence of genotype AA was significantly higher in atopic asthmatics than in nonatopic asthmatics. This finding reflects that GSTP1 Ile¹⁰⁵/Ile¹⁰⁵ genotype is likely to be a risk factor for the development of atopic asthma. Differently, Tamer et al. [18] stated that subjects with the GSTP1 homozygous Val¹⁰⁵/Val¹⁰⁵ genotype had a 3.55-fold increased risk of having atopic asthma compared to nonatopic asthma. However, Aynacioglu et al. [24] showed that the distribution of GSTP1 Ile¹⁰⁵Val genotypes and the frequency of GSTP1 Val¹⁰⁵/Val¹⁰⁵ homozygotes (3.7 vs. 3.9%) were not significantly different between atopic and nonatopic asthmatics. The data reported here also show that there were no significant differences between atopic and nonatopic cases in respect of the frequencies of GSTP1 BB genotype. In contrast to our results, Spiteri et al. [12] confirmed that the frequency of the GSTP1 Val¹⁰⁵/Val¹⁰⁵ genotype is reduced in atopic subjects compared with nonatopic subjects. In conclusion, we have identified an association between polymorphism in GSTP1 and asthma and that the frequency of GSTP1 AA was increased in patients with established asthma. The data reported here also show that the frequencies of GSTP1 BB were reduced in asthmatic persons, thus indicating a protective effect.

As the number of children with some genotypes was small in our study, the association of different GSTP1 genotypes and the atopic status and its phenotypes should be assessed on a larger number

of cases. We believe that our data must be considered as preliminary, because asthma is a complex polygenic disease. Individual polymorphisms may have small functional consequences; thus additional genetic polymorphisms in other genes are required to alter function significantly. Further research in this field will certainly elucidate the role of other genes, gene-gene and gene-environment interactions in asthma that will be important to prevent and/or offer a better therapy for asthma.

Conclusions

Our findings suggest that GSTP1 genotype AA is associated with the established asthma and that GSTP1 genotype BB confers a protective effect.

Acknowledgments

This work was supported by the Department of Clinical and Chemical Pathology & the Department of Paediatrics, Cairo University, Egypt. We also thank the Department of Clinical and Chemical Pathology at the National Research Centre (NRC).

References

1. Pinnock H, Shah R. Asthma. *BMJ* 2007; 334: 847-50.
2. Sengler C, Lau S, Wahn U, Nickel R. Interactions between genes and environmental factors in asthma and atopy: new developments. *Respir Res* 2002; 3: 7-22.
3. Daniels SE, Bhattacharrya S, James A, et al. A genome-wide search for quantitative trait loci underlying asthma. *Nature* 1996; 383: 247-50.
4. Thomas NS, Wilkinson J, Holgate ST. The candidate region approach to the genetics of asthma and allergy. *Am J Respir Crit Care Med* 1997; 156: S144-51.
5. Barnes PJ. Reactive oxygen species and airway inflammation. *Free Radic Biol Med* 1990; 9: 235-43.
6. Hayes JD, Strange RC. Potential contribution of the glutathione S-transferase supergene family to resistance to oxidative stress. *Free Radic Res* 1995; 22: 193-207.
7. Strange RC, Fryer AA. The glutathione S-transferases: influence of polymorphism on susceptibility to non familial cancers. In: Boffetta P, Caporaso N, Cuzick J, Lang M, Vineis P (eds). *Metabolic Polymorphisms and Cancer*. IARC Scientific Publications, Lyon, France 1999: 231-49.
8. Hayes JD, Strange RC. Glutathione S-transferase polymorphisms and their biological consequences. *Pharmacology* 2000; 61: 154-66.
9. Ollier WE, Davies E, Snowden N, Alldersea J, Fryer AA, Jones P, Strange RC. Association of homozygosity for glutathione-S-transferase GSTM1 null alleles is associated with the Ro1/La2 autoantibody profile in patients with systemic lupus erythematosus. *Arthritis Rheum* 1996; 39: 1763-4.
10. Matthey DL, Hassell AB, Plant M, et al. Association of polymorphism in the glutathione S-transferase loci with susceptibility and outcome in rheumatoid arthritis: comparison with the shared epitope. *Ann Rheum Dis* 1999; 58: 164-8.
11. Lee YL, Lee YC, Gou YL. Associations of glutathione S-transferase P1, M1, and environmental tobacco smoke with wheezing illness in school children. *Allergy* 2007; 62: 641-7.

12. Spiteri MA, Bianco A, Strange RC, Fryer AA. Polymorphisms at the glutathione S-transferase, GSTP1 locus: a novel mechanism for susceptibility and development of atopic airway inflammation. *Allergy* 2000; 55 (Suppl 61): 15-20.
13. Watson MA, Stewart RK, Smith GB, Massey TE, Bell DA. Human glutathione S-transferase P1 polymorphisms: relationship to lung tissue enzyme activity and population frequency distribution. *Carcinogenesis* 1998; 19: 275-80.
14. Global initiative for asthma (GINA): global strategy for asthma management and prevention (NHLBI/WHO workshop report), updated 2003. National Institute of Health; 2-3659: 4-10.
15. Zhong S, Wyllie AH, Barnes D, Wolf CR, Spurr NK. Relationship between the GSTM1 genetic polymorphism and susceptibility to bladder, breast and colon cancer. *Carcinogenesis* 1993; 14: 1821-4.
16. A genomewide search for asthma susceptibility loci in ethnically diverse populations. The Collaborative Study on the Genetics of Asthma. *Nat Genet* 1997; 15: 389-92.
17. Doull IJ, Lawrence S, Watson M, et al. Allelic association of gene markers on chromosome 5q and 11q with atopy and bronchial hyperresponsiveness. *Am J Respir Crit Care Med* 1996; 153: 1280-4.
18. Tamer L, Calikoglu M, Ates NA, et al. Glutathione-S-transferase gene polymorphisms (GSTT1, GSTM1, GSTP1) as increased risk factors for asthma. *Respirology* 2004; 9: 493-8.
19. Strange RC, Spiteri MA, Ramachandran S, Fryer AA. Glutathione-S-transferase family of enzymes. *Mutat Res* 2001; 482: 21-6.
20. Hemmingsen A, Fryer AA, Hepple M, Strange RC, Spiteri MA. Simultaneous identification of GSTP1 Ile¹⁰⁵→Val¹⁰⁵ and Ala¹¹⁴→Val¹¹⁴ substitutions using an amplification refractory mutation system polymerase chain reaction assay: studies in patients with asthma. *Respir Res* 2001; 2: 255-60.
21. Fryer AA, Bianco A, Hepple M, Jones PW, Strange RC, Spiteri MA. Polymorphism at the glutathione S-transferase GSTP1 locus. A new marker for bronchial hyperresponsiveness and asthma. *Am J Respir Crit Care Med* 2000; 161: 1437-42.
22. Caroll WD, Lenny W, Jones PW, et al. Effects of glutathione-S-transferase M1, T1 and P1 on lung function in asthmatic families. *Clin Exp Allergy* 2005; 35: 1155-61.
23. Gilliland FD, Gauderman WJ, Vora H, Rappaport E, Dubeau L. Effects of Glutathione-S-transferase M1, T1 and P1 on childhood lung function growth. *Am J Respir Crit Care Med* 2002; 166: 710-6.
24. Aynacioglu AS, Nacak M, Filiz A, Ekinci E, Roots I. Protective role of glutathione-S-transferase P1 (GSTP1)Val¹⁰⁵Val genotype in patients with bronchial asthma. *Br J Clin Pharmacol* 2004; 57: 213-7.
25. Lee YL, Hsiue TR, Lee YC, Lyn YC, Gou YL. The association between glutathione-S-transferase P1, M1, polymorphisms and asthma in Taiwanese schoolchildren. *Chest* 2005; 128: 1156-62.
26. Lee YL, Lin YC, Lee YC, Wang JY, Hsiue TR, Gou YL. Glutathione-S-transferase P1 gene polymorphism and air pollution as interactive risk factors for childhood asthma. *Clin Exp Allergy* 2004; 34: 1707-13.
27. Nickel R, Haider A, Sengler C. Association study of Glutathione-S-transferase P1 with asthma and bronchial hyper-responsiveness in two German pediatric populations. *Pediatr Allergy Immunol* 2005; 16: 539-41.