

Analysis of Olig2 and YKL-40 expression: a clinicopathological/immunohistochemical study for the distinction between subventricular zone II and III glioblastomas

Kelvin Manuel Piña Batista¹, Bruno Augusto Lourenco Costa², Isabel Cuervo-Arango Herreros¹, Ivan Fernandez Vega³, Julio Cesar Gutierrez Morales¹, Aitana Vallina Alvarez⁴, Pablo Isidro Marron⁴, Ángela Meilán⁵, Aurora Astudillo³, Kenia Yoelvi Alvarez⁶

¹Department of Neurosurgery, Hospital Universitario Central de Asturias, ²Department of Neurosurgery, Hospitais da Universidade de Coimbra, ³Department of Neuropathology, Hospital Universitario de Araba, ⁴IUOPA biobank, Hospital Universitario Central de Asturias, ⁵Department of Neuroradiology, Hospital Universitario Central de Asturias, ⁶Hospital Álvarez Buylla, Asturias, Spain

Folia Neuropathol 2016; 54 (1): 31-39

DOI: 10.5114/fn.2016.58913

Abstract

Glioblastomas (GBs) are the most common and lethal primary brain tumors in the adults. Glioblastomas originates either from astrocytes that have accumulated mutations and de-differentiated or from neural stem cells within the subventricular zone (SVZ) in close contact with the vasculature. Recently, several studies have hypothesized that gliomagenesis occurs in perivascular niches with highly invasive peripheral proliferating zones. The purpose of our study was to investigate the pathological and clinical significance of Olig2 and YKL40 immunoexpression in 152 GBs in relationship to the SVZ II and III. Olig2 expressions were successfully detected in 12 (15.58%) of 77 SVZ type II GBs and 16 (21.3%) of 75 SVZ type III GBs, respectively. YKL-40 expression was observed in 45 (58.4%) of 77 SVZ type II GBs and in 17 (22.6%) of 75 SVZ type III GBs, respectively. Stepwise multivariate Cox proportional hazards models were used, and the prognostic factors to significantly impact OS were: PFS < 54 weeks (HR: 5.86; CI: 3.02-11.33; p = 0.00); radiotherapy (HR: 0.34; CI: 0.18-0.60; p = 0.00); radio- and chemotherapy (HR: 0.05; CI: 0.03-0.10; p = 0.0), and YKL-40+ GBs (HR: 1.61; CI: 1.28-2.31; p = 0.01).

Key words: glioblastoma, subventricular zone, Olig2, YKL-40, clinicopathological, immunohistochemical.

Introduction

Glioblastoma (GB) is the most common primary brain tumor in the adults. Median survival of GB patients treated with aggressive multimodal therapy, including total resection, combined radiation and chemotherapy, and adjuvant chemotherapy is about

12 months [9,18,24,25]. Glioblastoma is actually considered a heterogeneous and dynamic disease [13,17,21]. Recent studies demonstrate that GB originates either from astrocytes that have accumulated mutations and de-differentiated or from neural stem cells within the subventricular zone (SVZ) in close

Communicating author

Kelvin Manuel Piña Batista, MD, MSc, MBA, PhD, Department of Neurosurgery, Hospital Universitario Central de Asturias, Av. de Las Segadas 22, 4a 33006 Oviedo, Spain, phone: +34 693 86 24 81, e-mail: pineappliedr@gmail.com

contact with the vasculature. In animal models, those neural stem cells may play a role in the gliomagenesis, recurrence, and resistance to therapies [17,28]. Probably, survival may be strongly affected by the tumor's relationship to the SVZ. Based on the MRI spatial relationship of the GB, Lim *et al.* [21] distinguish 4 types: type I, tumor contacting the SVZ and infiltrating cortex; type II, tumor contacting the SVZ only; type III, tumor involving the cortex but not involving the SVZ, and type IV, tumors spare both the cortex and the SVZ.

The precise origin of glioma stem cells (GSCs) is still unclear. Recent research efforts hypothesize that gliomagenesis occurs in perivascular niches with highly invasive peripheral proliferating zones [6,12,29]. Several studies report that Olig2 expression is limited in GSCs [7,12,22] and is probably being related to the SVZ type II as a proliferation regulator and glioma progenitor cell marker. Olig2 (a basic helix-loop-helix transcription factor) is expressed in the postnatal SVZ and plays a critical role in the lineage specification of progenitor cells into neurons and oligodendrocytes [20]. However, the literature on Olig2 and its association with glioblastoma prognosis is ambivalent [1,11,12,22]. Recent reports have found associations between glioblastoma and neural stem cells expressing Olig2 [8,12,20,35]. Therefore, a significant amount of the ongoing GB research is focused on better understanding how cells expressing Olig2 contribute to the gliomagenesis and therapeutic targets.

YKL-40 (also known as CHI3LI), a member of mammalian chitinase-like protein, is a growth factor for connective tissue cells that (although its function is not well defined) may play a role in the migration of endothelial cells, inflammation and tissue remodeling. It is also overexpressed in glioblastoma compared to anaplastic gliomas and low-grade gliomas [26,30,36].

The localization of YKL-40 expression related to the SVZ remains unclear. Given that YKL-40 immunorexpression is associated with poor prognosis and Olig2 is linked to the neural stem/progenitor cells, we investigated the clinical/prognostic significance of YKL-40 and Olig2 expression related to SVZ type II/III GBs.

Material and methods

Patients and samples

A retrospective study was performed on 152 patients harboring GBs in the SVZ type II/III treat-

ed by subtotal resection between 2006 and 2010. Paraffin-embedded samples were obtained from the Biobank of Asturias, in Central of Asturias University Hospital, Spain. For each case, the hematoxylin-eosin sections were reviewed and all cases were classified according to the World Health Organization (WHO) classification system as glioblastoma multiforme by a senior neuropathologist. Detailed data regarding clinical presentation, pathological analysis, progression-free survival, and overall survival outcome were recorded. Tumors were classified as limited to the cortex or type II (77 GBs) or limited to the SVZ or type III (75 GBs). Both, YKL-40 and Olig2 expressions were investigated by immunohistochemistry in all of the aforementioned cases. All samples used in this study were obtained with the approval of the Committee for Ethical Review Board of Central of Asturias University Hospital.

The extent of resection was determined on the basis of MRI results (within 48 hours after surgery). Subtotal and total resection were defined as those tumors with residual and no residual enhancement, respectively, achieved by comparing pre- and post-operative MRI. The extent of resection was classified as total (> 95%), subtotal (< 95%) or biopsy by a neuroradiologist blinded to patient outcomes. Patients with a Karnofsky Performance Scale (KPS) score \geq 70 and age < 60 were included to receive conventional radiotherapy and chemotherapy after surgical resection: 1.8-2.0 Gy per day, over a period of 6 weeks, for a total dose of 60 Gy and temozolomide therapy at a dose of 75 mg/m² per day, seven days a week for 42 consecutive days during radiotherapy (as used in the EORTC study by Stupp *et al.*) [19,31,33].

Immunohistochemistry

Monoclonal antibodies for YKL-40 (ab86428; Abcam, Cambridge, UK; dilution 1 : 500), and polyclonal anti-Olig2 antibody (ab9610; EDM Millipore, Massachusetts, USA; dilution 1 : 500) were used. Five-micrometer consecutive sections were cut from the paraffin-embedded samples. Each tissue section was deparaffinized and rehydrated with graded ethanol. Antigen retrieval was accomplished by boiling the sections for 15 minutes in 10 mmol/l EDTA, pH 6.0. Endogenous peroxidase activity was blocked with a 3% hydrogen peroxide for 10 minutes. Then, slides were incubated overnight at 4°C with respective primary antibodies. Visualization was performed using DAB (3,3'-diaminobenzidine). Tissue sections

were counterstained with hematoxylin, dehydrated, and mounted. An oligodendroglioma and hepatocellular carcinoma with immunoreactivity was used for positive control (Olig2 and YKL-40, respectively). As a negative control the primary antibodies were omitted.

Immunoreactivity for YKL-40 was evaluated by a three-tiered system (0 – negative; 1 – moderate/patchy staining in tumor cell; 3 – strongly positive) [26]. Staining for Olig2 was scored only in cells as positive (1), and negative or weak positive (0). The authors did the scoring independently. To obtain more accurate results, 2 independent observers evaluated all immunostaining experiments.

Statistical analysis

All statistical analyses were performed with SPSS Statistics version 20 (IBM) with a significance level of 5% ($p \leq 0.05$). The χ^2 test and the Fisher's exact test were used for the evaluation of the association between Olig2 and YKL-40 (positive vs. negative immunoeexpression) and covariates. Karnofsky (KPS) from 3 months was included for analyses because at this time used to occur the most significant and lasting change in patient clinical status. Overall survival (OS) was determined from the date of diagnosis to the date of death. Progression-free survival (PFS) was determined from the date of diagnosis to the date of relapse. Kaplan-Meier method was used to investigate Olig2 and YKL-40 expression as univariate in prediction of the patient's survival related to SVZ. Multivariate survival analyses were performed by a stepwise Cox proportional hazards model used for univariate and multivariate analyses of PFS and OS.

Results

Patient demographics are presented in Table I. Expressions of Olig2 and YKL-40 in 152 GBs were investigated by IHC. Olig2 expressions were successfully detected in 12 (15.58%) of 77 SVZ type II GBs and 16 (21.3%) of 75 SVZ type III GBs, respectively. YKL-40 expression was observed in 45 (58.4%) of 77 SVZ type II GBs and in 17 (22.6%) of 75 SVZ type III GBs, respectively. Positive expression of YKL-40 was found in the cytoplasm of GB tumor cells (Fig. 1). Olig2+ GB cells showed strong nuclear immunoreactivity. For better understanding of the analytical results, YKL-40 expressions were classified as positive (1+, 2+) or negative (0).

Relationship between the immunoeexpression of Olig2 and YKL-40 and clinico-pathological findings

The results of the pathologic findings are shown in Table II. Expression of Olig2 was not associated with the patient's age (≤ 65 years old versus > 65 years old), gender, Karnofsky at diagnosis (KPS at Dx), progression-free survival (PFS), overall survival (OS), and GB type. However, Olig 2 was associated with KPS at 3 months ($p = 0.035$). YKL-40 did not ($p > 0.05$) correlate with gender, and KPS at diagno-

Table I. Clinical characteristics of 152 patients with glioblastoma

Groups	Characteristics
Age	Years
≤ 65	93
> 65	59
Gender	N°
Male	79
Female	73
Karnofsky (KPS) at Dx, Score	N°
< 70	20
≥ 70	132
KPS at 3 months, Score	N°
< 70	47
≥ 70	105
Overall Survival, OS	Weeks
≤ 54	98
> 54	53
Progression-free survival, PFS	Weeks
≤ 54	131
> 54	21
Subventricular relationship	N°
Group II	77
Group III	75
Extent of tumor resection	N°
Gross total resection	40
Subtotal resection	86
Biopsy	26
First-line therapy	N°
Radiotherapy	26
Chemotherapy	1
Radiotherapy and chemotherapy	98
Therapeutic abstention	27

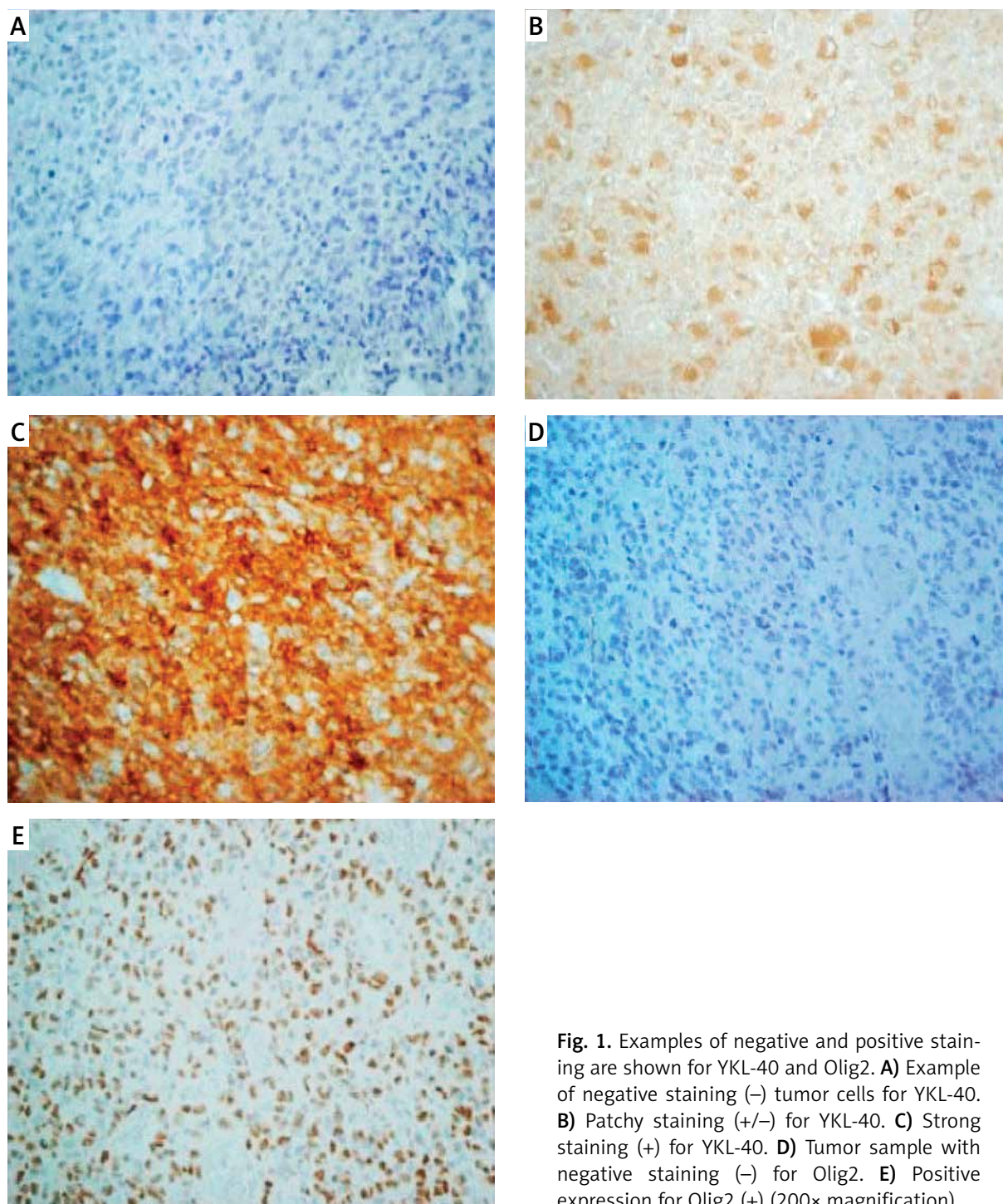


Fig. 1. Examples of negative and positive staining are shown for YKL-40 and Olig2. **A)** Example of negative staining (-) tumor cells for YKL-40. **B)** Patchy staining (+/-) for YKL-40. **C)** Strong staining (+) for YKL-40. **D)** Tumor sample with negative staining (-) for Olig2. **E)** Positive expression for Olig2 (+) (200× magnification).

sis. Interestingly, YKL-40 was significantly associated with age, KPS at 3 months, PFS, OS, and GB type. Kaplan-Meier analysis showed that YKL-40 (CHI3L1) expression was significantly different from Olig2 expression ($p > 0.05$) (Figs. 2 and 3).

Univariate and multivariate analysis of prognostic variables

To identify and evaluate the variables with potential prognostic significance in patients with GB, univariate and multivariate analysis using Kaplan-Meier

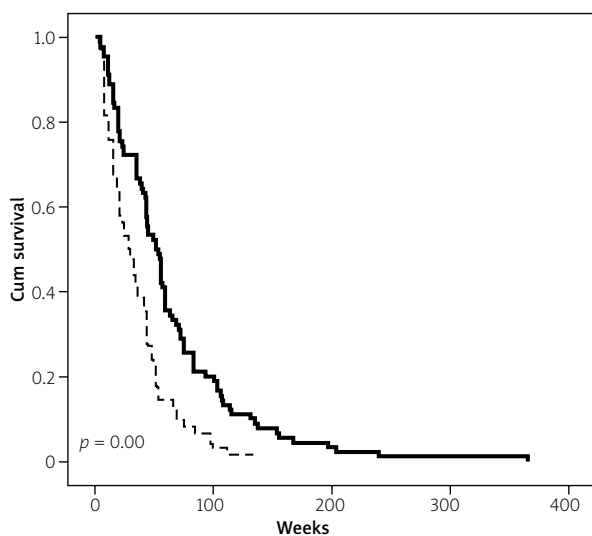
Table II. Correlations between CHI3L1 and Olig2 expression in tumor tissues and clinic pathological features of patients with glioblastoma

Variables	CHI3L1		p value	Olig2		p value
	Positive	Negative		Positive	Negative	
Age						
< 65	31	62	0.019*	20	73	0.218
>65	31	28	8	51		
Gender						
Male	34	45	0.557	13	66	0.516
Female	28	45	15	58		
KPS at Dx						
< 70	11	9	0.165	2	18	0.297
> 70	51	81	26	106		
KPS at 3 months						
< 70	26	21	0.015*	4	43	0.035*
> 70	36	69	24	81		
PFS						
< 54	58	73	0.013*	22	109	0.157
> 54	4	17	7	14		
OS						
< 54	52	46	0.00*	15	83	0.164
> 54	10	44	13	41		
GBMs						
SVZ II	45	32	0.00*	12	65	0.361
SVZ III	17	58	16	59		
Extent of tumor resection						
Gross total resection	9	31	0.02*	9	31	0.281
Subtotal resection	36	50	17	69		
Biopsy	17	9	2	24		
First-line therapy						
Radiotherapy	14	12	0.029*	1	26	0.023*
Chemotherapy	0	1	1	0		
Radiotherapy and chemotherapy	32	66	22	76		
Therapeutic absention	16	11	1	26		

χ^2 tests, * $p < 0.05$

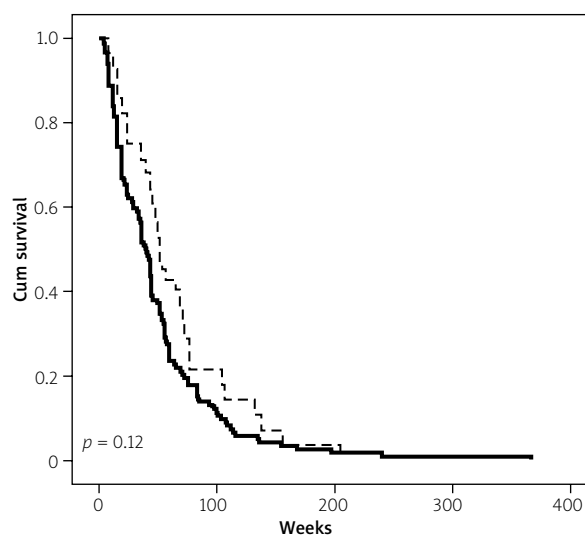
and Cox proportional hazard model was performed. In a univariate proportional hazards regression analysis, the factors associated with survival were: age, KPS at 3 months, YKL-40 (CHI3L1), and Olig2. In addition, univariate analysis confirmed that neither the gender ($p = 0.13$) nor Olig2 immunoexpression ($p = 0.86$) affected OS.

We evaluated the potential prognostic factors following the Cox proportional hazards models using forward stepwise multivariate selection analysis (Table III). The variables significantly associated with OS were: PFS < 54 weeks (HR: 5.86; CI: 3.02-11.33; $p = 0.00$); radiotherapy (HR: 0.34; CI: 0.18-0.60; $p = 0.00$); radio- and chemotherapy (HR: 0.05; CI: 0.03-



— Negative CHI3L1 expression - - - Positive CHI3L1 expression

Fig. 2. Patients expressing YKL-40 (CHI3L1) in tumor tissues show a significantly worse overall survival. Kaplan-Meier analysis for overall survival in a series of glioblastomas according to YKL 40 expression.



— Negative Olig2 expression - - - Positive Olig2 expression

Fig. 3. Kaplan-Meier overall survival curves of the series of 152 glioblastomas with a different expression of Olig2. The difference in survival between Olig2+ and Olig2- is not statistically significant ($p = 0.12$).

Table III. Univariate and multivariate analyses of variables associated with survival

Variables	Univariate analysis			Multivariate analysis		
	HR	95% CI	p value	HR	95% CI	p value
Age, years (< 65 vs. > 65)	0.46	0.33-0.65	0.00*	0.76	0.52-1.12	0.17
Gender (male vs. female)	1.28	0.92-1.78	0.13	1.21	0.85-1.71	0.27
KPS at Dx (< 70 vs. > 70)	0.42	1.46-3.82	0.00*			
KPS at 3 months (< 70 vs. > 70)	3.95	2.72-5.73	0.00*	1.50	0.97-2.32	0.63
PFS, weeks (< 54 vs. > 54)	0.13	0.07-0.25	0.00*	5.41	2.78-10.54	0.00*
CHI3L1-GBM cells (pos. vs. neg.)	1.22	1.08-1.38	0.00*	1.61	1.12-2.31	0.01*
Olig2-GBM (pos. vs. neg.)	0.98	0.84-1.15	0.86			
Biopsy			0.00*			
Gross total resection	0.23	0.14-0.40	0.00*			
Subtotal resection	0.31	0.19-0.49	0.00*			
Radiotherapy			0.00*	0.34	0.18-0.60	0.00*
Chemotherapy	2.65	0.35-20.1	0.34	1.02	0.13-8.02	0.97
Radiotherapy and chemotherapy	0.10	0.05-0.17	0.00*	0.05	0.03-0.10	0.00*
Therapeutic absence	2.84	1.59-5.04	0.00*			

Fisher's exact, * $p < 0.05$

KPS – Karnofsky score, KPS at Dx – Karnofsky score at diagnosis, PFS – progression-free survival
CI – confidence interval, HR – hazard ratio, pos. – positive, neg. – negative

0.10; $p = 0.0$), and YKL-40+ GBs (HR: 1.61; CI: 1.28-2.31; $p = 0.01$). However, Olig2+ GBs were not included in multivariate analysis.

Discussion

Although the SVZ has been recognized for many years, its neurogenesis and gliomagenesis remains unclear. Subventricular zone may be a source of tumors with higher proliferative and invasive capacities [5]. Recent research efforts in neuro-oncology are focused in targeting the tumorigenesis theory and to find signal transduction pathways that influence the GB development and change its dismal prognosis, given that surgery and adjuvant chemotherapy with radiotherapy are insufficient due to a diffuse infiltration by tumor tissue into the brain [4,12,37]. Therefore, identifying molecular targets that could provide prognostic new data is needed and would be helpful for its therapy.

Olig2+ GBs are not significantly expressed in GB type II and III, against predictive and critical functions for Olig2 [32,34]. Under the stem cell hypothesis, Olig2 fulfills criteria of a lineage-restricted competence factor for gliogenesis [8,15] that is necessary for the development of neural progenitors and progeny cells in the CNS [12]. Like others, [22] we have suggested that Olig2 expression may be downregulated in mature astrocyte.

YKL-40 is a potent angiogenic factor that was recently identified to be one of the most expressed proteins in GB when compared to low-grade glioma and normal brain. YKL-40 protein expression was proposed as a potential serum marker for GB [10,16,26]. High YKL-40 expression in GB has been correlated with a short OS and a poor response to radiotherapy [14,16]. We found that GBs contacting the SVZ trended with shorter OS, although it is unclear if tumors contacting the SVZ have more aggressive behavior, allowing tumor stem cells and their progeny to rapidly proliferate and migrate. The main reasons for a less favorable outcome in GB patients with SVZ involvement are not yet completely understood. Interestingly, we have found a significantly greater YKL-40 expression among the subventricular zone contacting GBs than Olig2+ GBs. Previous work [27] has determined that YKL-40 was particularly linked to SVZ type IV and V. One of the limitations of this study was the small sample size of SVZ type II patients. According to our results, there was also a trend toward a worse OS among SVZ

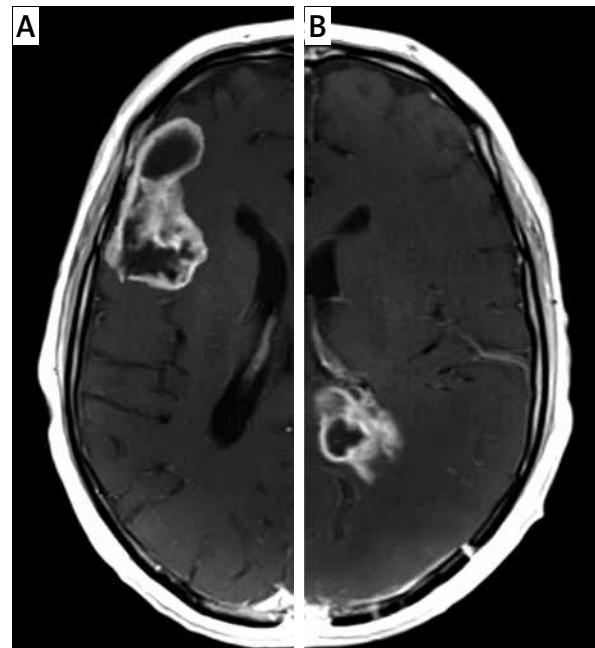


Fig. 4. MRI T1 weighted sequence after Gd-DTPA infusion shows the spatial relationship of glioblastomas related to the SVZ. **A)** SVZ III tumors involve only the cortex; **B)** SVZ II contacts only the SVZ.

type II GBs when compared with SVZ type III GBs. Univariate, multivariate, and Kaplan-Meier analyses demonstrated that expression of YKL-40 was a significant negative indicator of the behavior of GB.

The present study was performed on a heterogeneous population of GB patients, all of whom underwent total resection, subtotal resection or biopsy followed by the same adjuvant therapy (chemotherapy and radiotherapy). To date, the extent of resection has been an accepted prognostic factor [3,23,33]. Nevertheless, although it is well accepted that tumor resection may improve the symptoms we have found impact on OS only in the univariate analysis. However, extensive resection combined with adjuvant therapy could also explain the advantageous impact in terms of OS in a multivariate analysis.

The difference in survival among patients with GB has been seen to significantly depend on age, KPS at 3 months, extent of resection, and immunorepression of YKL-40. We have found that there was a significant correlation between the expression of Olig2 and KPS at 3 months. Age at diagnosis and preoperative KPS score have been the most recognized predictors of OS [4]. KPS score at 3 months from diagnosis was a prognostic factor more valuable than KPS

score at diagnosis, which may be attributed to the influence of surgery. Most of YKL-40+ GBs had a PFS of less than 54 weeks. These data differ from the previous report [2] that found no prognostic association between YKL-40 expression and PFS. However, such disagreement may be because our study has a larger sample size and different age groups of patients.

Conclusions

Up to date, significant progress has been made in the understanding of GB regarding its topographical molecular expressions. The presence of GBs, which express prognostic markers in relationship to the subventricular zone, is of practical as well as theoretical interest. In fact, this information may be the road by which the most effective therapy can be focused. Our results demonstrated that dismal prognosis of GBs is significantly correlated to YKL-40 expression and linked to SVZ relationship. As YKL-40 has been found in serum and in brain tumor tissue, it has a potential as a therapeutic and prognosis marker for GB. Current insights will ultimately lead to a more individualized therapy for GB patients.

Our study suffers from the same limitations as other retrospective studies, with a biased selection of SVZ topographical locations, which influences the results. Therefore, further controlled studies are needed to validate our results in a prospective study with a greater number of GBs patients.

Disclosure

Authors report no conflict of interest.

References

1. Agnihotri S, Burrell KE, Wolf A, Jalali S, Hawkins C, Rutka JT, Zadeh G. Glioblastoma, a brief review of history, molecular genetics, animal models and novel therapeutic strategies. *Arch Immunol Ther Exp* 2013; 61: 25-41.
2. Antonelli M, Buttarelli FR, Arcella A, Nobusawa S, Donofrio V, Oghaki H, Giangaspero F. Prognostic significance of histological grading, p53 status, YKL-40 expression, and IDH1 mutations in pediatric high-grade gliomas. *J Neurooncol* 2010; 99: 209-215.
3. Bloch O, Han SJ, Cha S, Sun M, Aghi MK, McDermott MW, Berger MS, Parsa A. Impact of extent of resection for recurrent glioblastoma on overall survival. *J Neurosurg* 2012; 117: 1032-1038.
4. Bozdag S, Li A, Riddick G, Kotliarov Y, Baysan M, Iwamoto FM, Cam MC, Kotliarova S, Fine HA. Age-Specific Signatures of Glioblastoma at the Genomic, Genetic, and Epigenetic Levels. *PLoS One* 2013; 8: e62982.
5. Chaichana KL, Pendleton C, Chambless L, Camara-Quintana J, Nathan JK, Hassam-Malani L, Li G, Harsh IV GR, Thompson RC, Lim M, Quinones-Hinojosa A. Multi-institutional validation of a preoperative scoring system which predicts survival for patients with glioblastoma. *J Clin Neurosci* 2013; 20: 1422-1426.
6. Chen J, Li Y, Yu TS, McKay RM, Burns DK, Kernie SG, Parada LF. A restricted cell population propagates glioblastoma growth after chemotherapy. *Nature* 2012; 488: 522-526.
7. Cheng L, Bao S, Rich JN. Potential therapeutic implications of cancer stem cells in glioblastoma. *Biochem Pharmacol* 2010; 80: 654-665.
8. Colman H, Zhang L, Sulman EP, McDonald M, Shoostari NL, Rivera A, Popoff S, Nutt CL, Louis DN, Cairncross JG, Gilbert MR, Phillips HS, Mehta MP, Chakravarti A, Pelloski CE, Bhat K, Feuerstein BG, Jenkins RB, Aldape K. A multigene predictor of outcome in glioblastoma. *Neurooncol* 2010; 12: 49-57.
9. Dahlrot RH, Kristensen BW, Hjelmberg J, Herrstedt J, Hansen S. A population-based study of high-grade gliomas and mutated isocitrate dehydrogenase 1. *Int J Clin Exp Pathol* 2013; 6: 31-40.
10. Francescone RA, Scully S, Faibish M, Taylor SL, Oh D, Moral L, Yan W, Bentley B, Shao R. Role of YKL-40 in the angiogenesis, radioresistance, and progression of glioblastoma. *J Biol Chem* 2011; 286: 15332-15343.
11. Georgieva L, Moskvina V, Peirce T, Norton N, Bray NJ, Jones L, Holmans P, MacGregor S, Zammit S, Wilkinson J, Williams H, Nikolov I, Williams N, Ivanov D, Davis KL, Haroutunian V, Buxbaum JD, Craddock N, Kirov G, Owen MJ, O'Donovan MC. Convergent evidence that oligodendrocyte lineage transcription factor 2 (OLIG2) and interacting genes influence susceptibility to schizophrenia. *Proc Natl Acad Sci USA* 2006; 103: 12469-12474.
12. Ghazi SO, Stark M, Zhao Z, Mobley BC, Munden A, Hover L, Abel TW. Cell of Origin Determines Tumor Phenotype in an Oncogenic Ras/p53 Knockout Transgenic Model of High-Grade Glioma. *J Neuropathol Exp Neurol* 2012; 71: 729-740.
13. Haskins WE, Zablotsky BL, Foret MR. Molecular characteristics in MRI-classified group 1 glioblastoma multiforme. *Front Oncol* 2013; 3: 1-8.
14. Horbinski C, Wang G, Wiley CA. YKL-40 is directly produced by tumor cells and is inversely linked to EGFR in glioblastomas. *Int J Clin Exp Pathol* 2010; 3: 226-237.
15. Ihrie RA, Alvarez-Buylla A. Lake-front property: a unique germinal niche by the lateral ventricles of the adult brain. *Neuron* 2011; 70: 674-686.
16. Iwamoto FM, Hottinger AF, Karimi S, Riedel E, Dantis J, Jahdi M, Panageas KS, Lassman AB, Abrey LE, Fleisher M, DeAngelis LM, Holland EC, Hormigo A. Serum YKL-40 is a marker of prognosis and disease status in high-grade gliomas. *Neurooncol* 2011; 13: 1244-1251.
17. Jafri NF, Clarke JL, Weinberg V, Barani IJ, Cha S. Relationship of glioblastoma multiforme to the subventricular zone is associated with survival. *Neurooncol* 2013; 15: 91-96.
18. Karsy M, Gelbman M, Paarth S, Balumbu O, Moy F, Arslan E. Established and emerging variants of glioblastoma multiforme: review of morphological and molecular features. *Folia Neuro-pathol* 2012; 50: 301-321.
19. Ku BM, Lee YK, Ryu J, Jeong JY, Choi J, Eun KM, Shin HY, Kim DG, Hwang EM, Yoo JC, Park JY, Roh GS, Kim HJ, Cho GJ, Choi WS,

- Paek SH, Kang SS. CHI3L1 (YKL-40) is expressed in human gliomas and regulates the invasion, growth and survival of glioma cells. *Int J Cancer* 2011; 128: 1316-1326.
20. Ligon KL, Huillard E, Mehta S, Kesari S, Liu H, Alberta JA, Bachoo RM, Kane M, Louis DN, DePinho RA, Anderson DJ, Stiles CD, Rowitch DH. Olig2-regulated lineage-restricted pathway controls replication competence in neural stem cells and malignant glioma. *Neuron* 2007; 53: 503-517.
 21. Lim DA, Cha S, Mayo MC, Chen M, Keles E, VandenBerg S, Berger M. Relationship of glioblastoma multiforme to neural stem cell regions predicts invasive and multifocal tumor phenotype. *Neurooncol* 2007; 9: 424-429.
 22. Marshall CAG, Novitsch BG, Goldman JE. Olig2 Directs Astrocyte and Oligodendrocyte Formation in Postnatal Subventricular Zone Cells. *J Neurosci* 2005; 25: 7289-7298.
 23. McGirt MJ, Chaichana KL, Attenello FJ, Weingart JD, Than K, Burger PC, Olivi A, Brem H, Quinones-Hinojosa A. Extent of surgical resection is independently associated with survival in patients with hemispheric infiltrating low-grade gliomas. *Neurosurgery* 2008; 63: 700-708.
 24. Michaelsen SR, Christensen IJ, Grunnet K, Stockhausen M, Broholm H, Kostaljanetz M, Poulsen HS. Clinical variables serve as prognostic factors in a model for survival from glioblastoma multiforme: an observational study of a cohort of consecutive non-selected patients from a single institution. *BMC Cancer* 2013; 13: 1-11.
 25. Park CK, Kim JH, Nam DH, Kim CY, Chung SB, Kim YH, Seol HJ, Kim TM, Choi SH, Lee SH, Heo DS, Kim IH, Kim DG, Jung HW. A practical scoring system to determine whether to proceed with surgical resection in recurrent glioblastoma. *Neurooncol* 2013; 15: 1096-1101.
 26. Pelloski CE, Mahajan A, Maor M, Chang EL, Woo S, Gilbert M, Colman H, Yang H, Ledoux A, Blair H, Passe S, Jenkins RB, Aldape KD. YKL-40 Expression is Associated with Poorer Response to Radiation and Shorter Overall Survival in Glioblastoma. *Clin Cancer Res* 2005; 11: 3326-3334.
 27. Piña-Batista KM, Fernandez-Vega I, de Eulate-Beramendi SA, Gutierrez-Morales JC, Kurbanov A, Asnel D, Meilán A, Astudillo A. Prognostic significance of the markers IDH1 and YKL40 related to the subventricular zone. *Folia Neuropathol* 2015; 53: 52-59.
 28. Reya T, Morrison SJ, Clarke MF, Weissman IL. Stem cells, cancer, and cancer stem cells. *Nature* 2001; 414: 105-111.
 29. Schiffer D, Mellai M, Annovazzi L, Caldera V, Piazzini A, Denysenko T, Melcarne A. Stem cell niches in glioblastoma: a neuropathological view. *Biomed Res Int* 2014; 2014: 1-7.
 30. Shao R, Francescone RA, Ngernyuang N, Bentley B, Taylor SL, Moral L, Yan W. Anti-YKL-40 antibody and ionizing irradiation synergistically inhibit tumor vascularization and malignancy in glioblastoma. *Carcinogenesis* 2014; 35: 373-382.
 31. Stupp R, Mason WP, van den Bent MJ, Weller M, Fisher B, Taphoorn MJ, Belanger K, Brandes AA, Marosi C, Bogdahn U, Curschmann J, Janzer RC, Ludwin SK, Gorlia T, Allgeier A, Lacombe D, Cairncross JG, Eisenhauer E, Mirimanoff RO; European Organisation for Research and Treatment of Cancer Brain Tumor and Radiotherapy Groups; National Cancer Institute of Canada Trials Group. Radiotherapy plus concomitant and adjuvant temozolomide for glioblastoma. *N Engl J Med* 2005; 352: 987-996.
 32. Tabu K, Ohba Y, Suzuki T, Makino Y, Kimura T, Ohnishi A, Sakai M, Watanabe T, Tanaka S, Sawa H. Oligodendrocyte lineage transcription factor 2 inhibits the motility of a human glial tumor cell line by activating RhoA. *Molecular Cancer Res* 2007; 5: 1099-1109.
 33. Urbanska K, Sokolowska J, Szmids M, Sysa P. Glioblastoma multiforme - an overview. *Contemp Oncol* 2014; 18: 307-312.
 34. Van Meir EG, Hadjipanayis CG, Norden AD, Shu HK, Wen PY, Olson JJ. Exciting new advances in neuro-oncology: the avenue to a cure for malignant glioma. *Cancer J Clin* 2010; 60: 166-193.
 35. Yip S, Butterfield YS, Morozova O, Chittaranjan S, Blough MD, An J, Birol I, Chesnelong C, Chiu R, Chuah E, Corbett R, Docking R, Firme M, Hirst M, Jackman S, Karsan A, Li H, Louis DN, Maslova A, Moore R, Moradian A, Mungull KL, Perizzolo M, Qian J, Roldan G, Smith EE, Tamura-Wells J, Thiessen N, Varhol R, Weiss S, Wu W, Young S, Zhao Y, Mungall AJ, Jones SJ, Morin GB, Chan JA, Cairncross JG, Marra MA. Concurrent CIC mutations, IDH mutations and 1p/19q loss distinguish oligodendrogliomas from other cancers. *J Pathol* 2012; 226: 7-16.
 36. Zhang W, Kawanishi M, Miyake K, Kagawa M, Kawai N, Murao K, Nishiyama A, Fei Z, Zhang X, Tamiya T. Association between YKL-40 and adult primary astrocytoma. *Cancer* 2010; 116: 2688-2697.
 37. Zhu VF, Yang J, Lebrun DG, Li M. Understanding the role of cytokines in Glioblastoma Multiforme pathogenesis. *Cancer Lett* 2012; 316: 139-150.