

QUIZ

WHAT IS YOUR DIAGNOSIS?

A 60-year-old woman underwent a simple appendectomy due to signs and symptoms of acute appendicitis. Gross examination showed a swollen appendix with engorged serosa partly covered with fibrinous exudate. Microscopically the appendix showed a neu-

trophilic infiltrate of the entire thickness of its wall with an extension into the periappendiceal adipose tissue. In addition single clear cells and groups of clear cells were found in the muscularis propria.

What is your diagnosis?

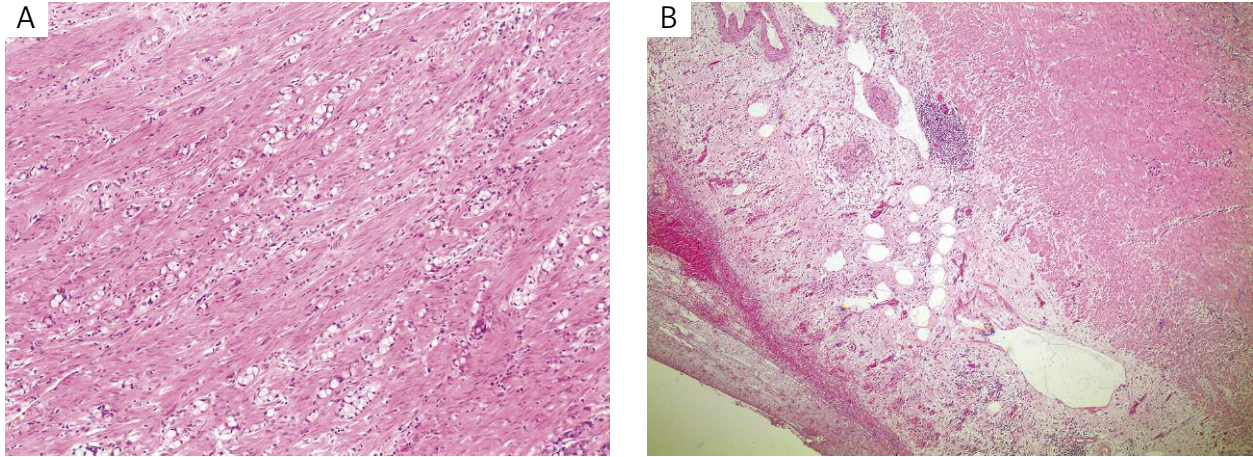


Fig. 1. Figure 1A depicts a microscopic image of clear cells infiltrating the muscularis propria (HE, 400×). Figure 1B shows an inflammatory infiltrate of the periappendiceal fat, fibrinous exudate of the serosa and muscularis propria infiltrated by the clear cells (HE, 40×)

Artur Bartczak, Konrad Ptasiński

Department of Pathology, Medical Centre for Postgraduate Education, Warsaw, Poland

Answers should be sent to the Editorial Office by 30.11.2012. The correct answer will be announced in the next issue of the *Polish Journal of Pathology*. All participants with the highest number of correct answers to the quizzes published in vol. 63 (4 issues) will be entered into the prize draw for a book.