

Quiz

WHAT IS YOUR DIAGNOSIS?

We present the case of a 65-year-old man suffering from right cheek swelling that was excised. The examined specimen revealed a firm mass measuring 4 cm × 3.5 cm × 1 cm and covered by an ellipse of skin. Histopathological examination showed multiple hair follicle dilatations in the dermis that were filled with horny

material or keratin. One of these hair follicles was connected to the overlying epidermis. Multiple secondary hair follicles with sebaceous lobules embedded in their walls were radiating from the dilated primary follicles. Most of the hair follicles were surrounded by dense lymphoplasmacytic infiltrate (Fig. 1).

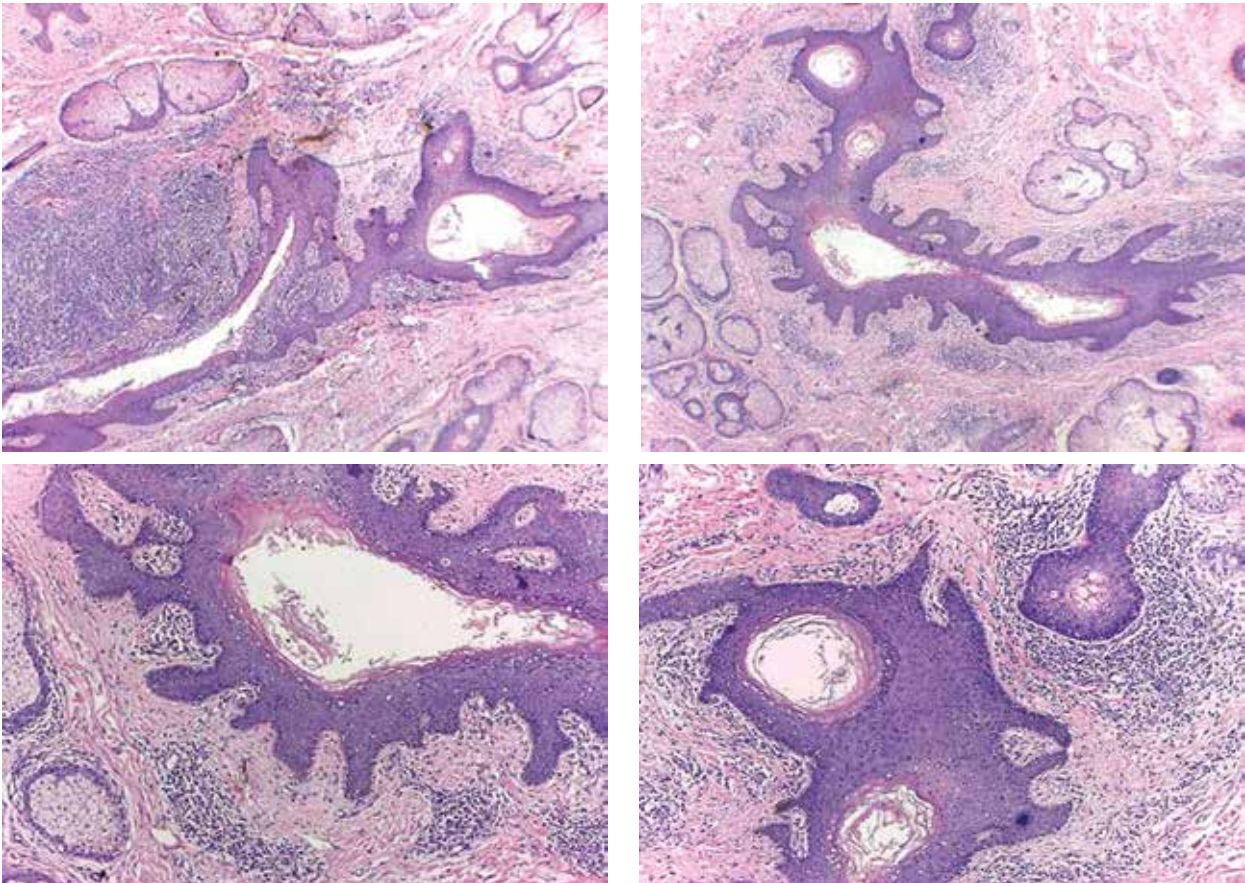


Fig. 1.

ASMAA ABDOU

Pathology Department, Faculty of Medicine, Egypt

This work was partially supported by grants from E-DA Hospital (Grant number EDAHP103051).

Answers should be sent to the Editorial Office by 15.08.2014. The correct answer will be announced in the next issue of the *Polish Journal of Pathology*. All participants with the highest number of correct answers to the quizzes published in vol. 65 (4 issues) will be entered into the prize draw for a book.