

Quiz

WHAT IS YOUR DIAGNOSIS?

A 29-year-old healthy man visited our office because of a slight pain of the left lower limb. Physical examination revealed a tiny erythema, which did not reach a definitive diagnosis. A punch biopsy was performed at his urging. Histopathological examination showed a crust formation on the surface of the skin

and a brightly eosinophilic substance in the dermis (Fig. 1). Other histological findings include a marked perivascular infiltrate of lymphocytes, eosinophils and plasma cells in the dermis (Figs. 2, 3) and extravasations in the upper dermis (Fig. 4).

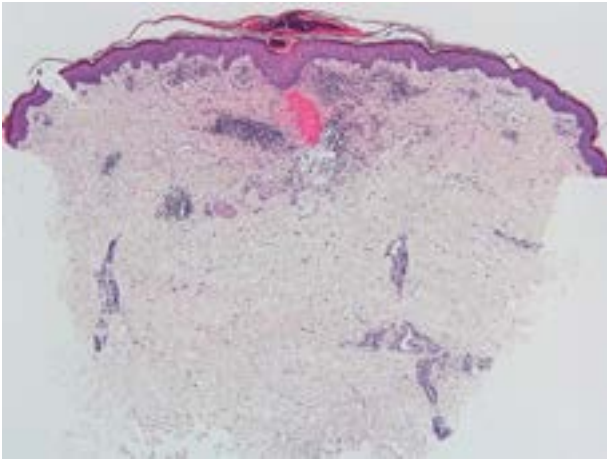


Fig. 1.

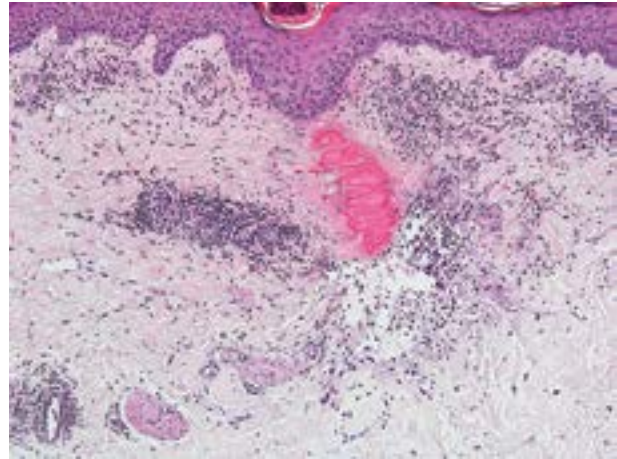


Fig. 2.

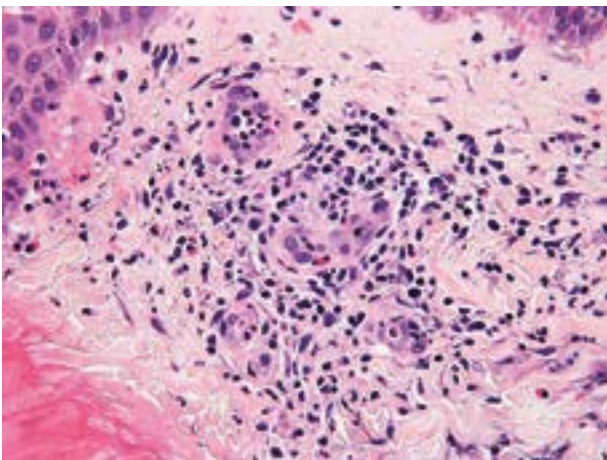


Fig. 3.

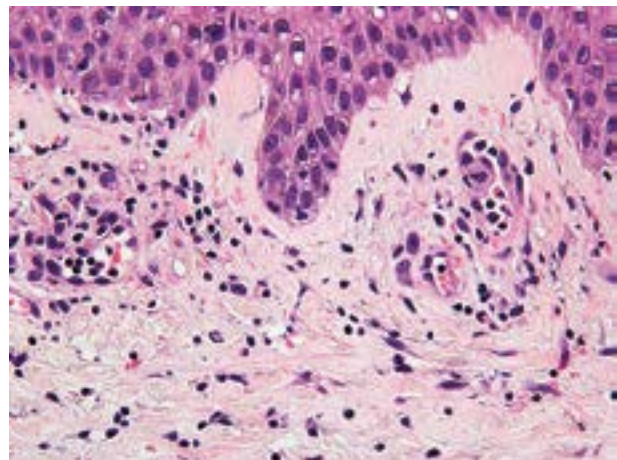


Fig. 4.

Takuya Miyagawa, Ryosuke Saigusa, Shinichi Sato
Department of Dermatology, University of Tokyo Graduate School of Medicine, Tokyo, Japan

Answers should be sent to the Editorial Office by 15.03.2017. The correct answer will be announced in the next issue of the *Polish Journal of Pathology*. All participants with the highest number of correct answers to the quizzes published in vol. 68 (4 issues) will be entered into the prize draw for a book.