

Quiz

WHAT IS YOUR DIAGNOSIS?

An 18-year-old, healthy female was consulted in Department of Otolaryngology with three-day-lasting headache and repetitive oral bleeding. Computed tomography revealed a large, well-circumscribed, expansile mass occupying ethmoid cells, nasal cavities and ventral part of the sphenoid sinus. In subsequent magnetic resonance imaging the lesion presented as a polycystic tumor with fluid-fluid levels. Pterional craniotomy

was carried out. The resected specimen on microscopic examination was cellular with bland, monomorphic spindled cells dispersed in the stroma which contained numerous, small, round bony psammoma-like bodies (Figs. 1, 2). The stromal cells were negative for EMA, CD34, S100, PR, CK AE1/3. Cystic degeneration was observed. These cysts were lined by fibrous wall with giant cells and haemorrhages (Figs. 3, 4).

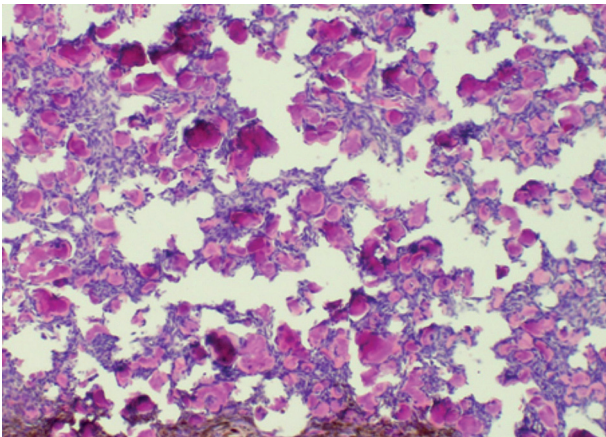


Fig. 1.

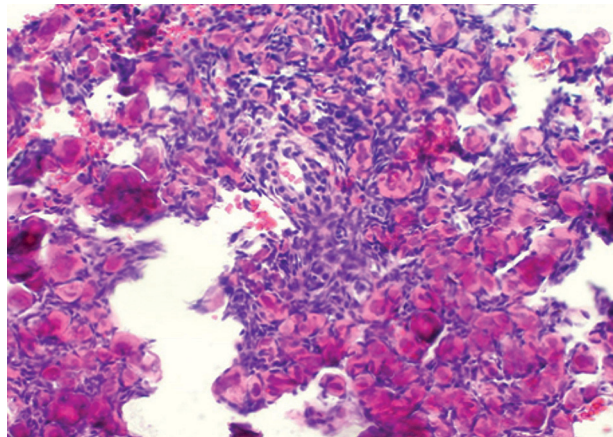


Fig. 2.

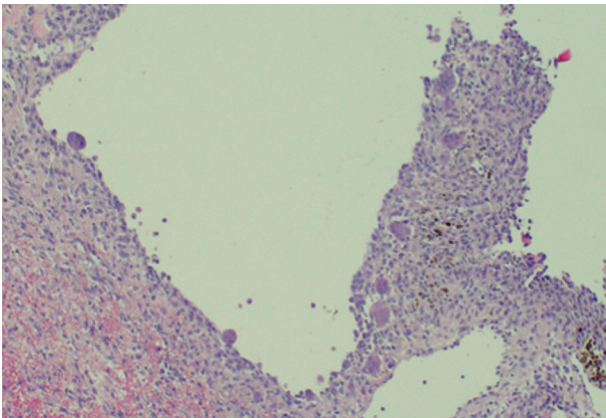


Fig. 3.

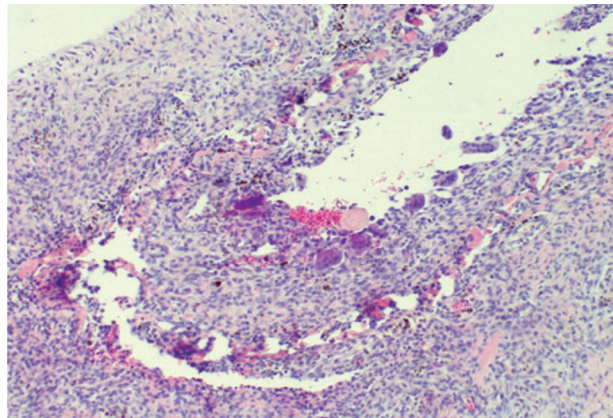


Fig. 4.

Dominik Radzki¹, Jolanta Szade², Tomasz K. Nowicki³, Wojciech S. Biernat²

¹Department of Periodontology and Oral Mucosal Diseases, Medical University of Gdansk, Poland

²Department of Pathomorphology, Medical University of Gdansk, Poland

³2nd Department of Radiology, Medical University of Gdansk, Poland

Answers should be sent to the Editorial Office until 15th October 2021. The correct answer will be announced in the next issue of the *Polish Journal of Pathology*.

